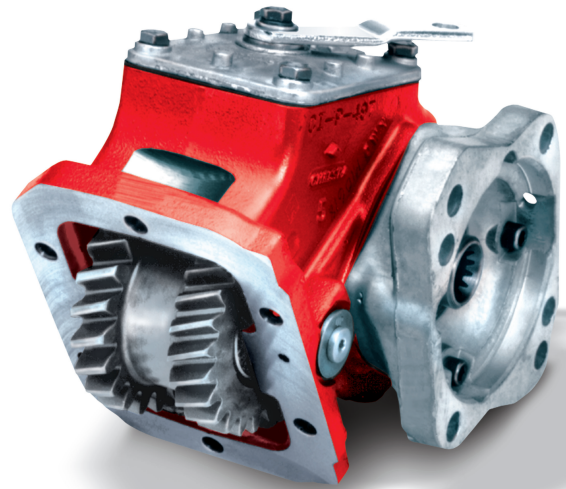


CHELSEA® 447 SERIES

Two Gear PTO for Mechanical Transmissions

Chelsea's 447 Series is another problem solving PTO. It features a one-piece input gear that has a space between the two sets of gear teeth. This helps eliminate interference problems within the PTO aperture on transmissions that might have adjacent gear interference. The 447 Series features the same options as the popular 442 Series plus a few more with special options to simplify the installation of PTOs on Mitsubishi FUSO and Nissan trucks. The 447 Series is available with the adapter or unique installation kit that may be required for these vehicles. The 447 has strong tapered bearings instead of needle bearings for greater load bearing capability. Numerous output options including Chelsea's popular 360° rotatable flange, internal speed ratios and multiple shift options plus a self-lube option for transmissions that have problems getting lubrication to the PTO make this one versatile PTO. Take advantage of Chelsea PTO technology to increase performance and lower costs.



447 Series

Applications:

- Aerial
- Snow & Ice Removal
- Dump Trucks & Trailers
- Fire & Rescue
- Refuse
- Service

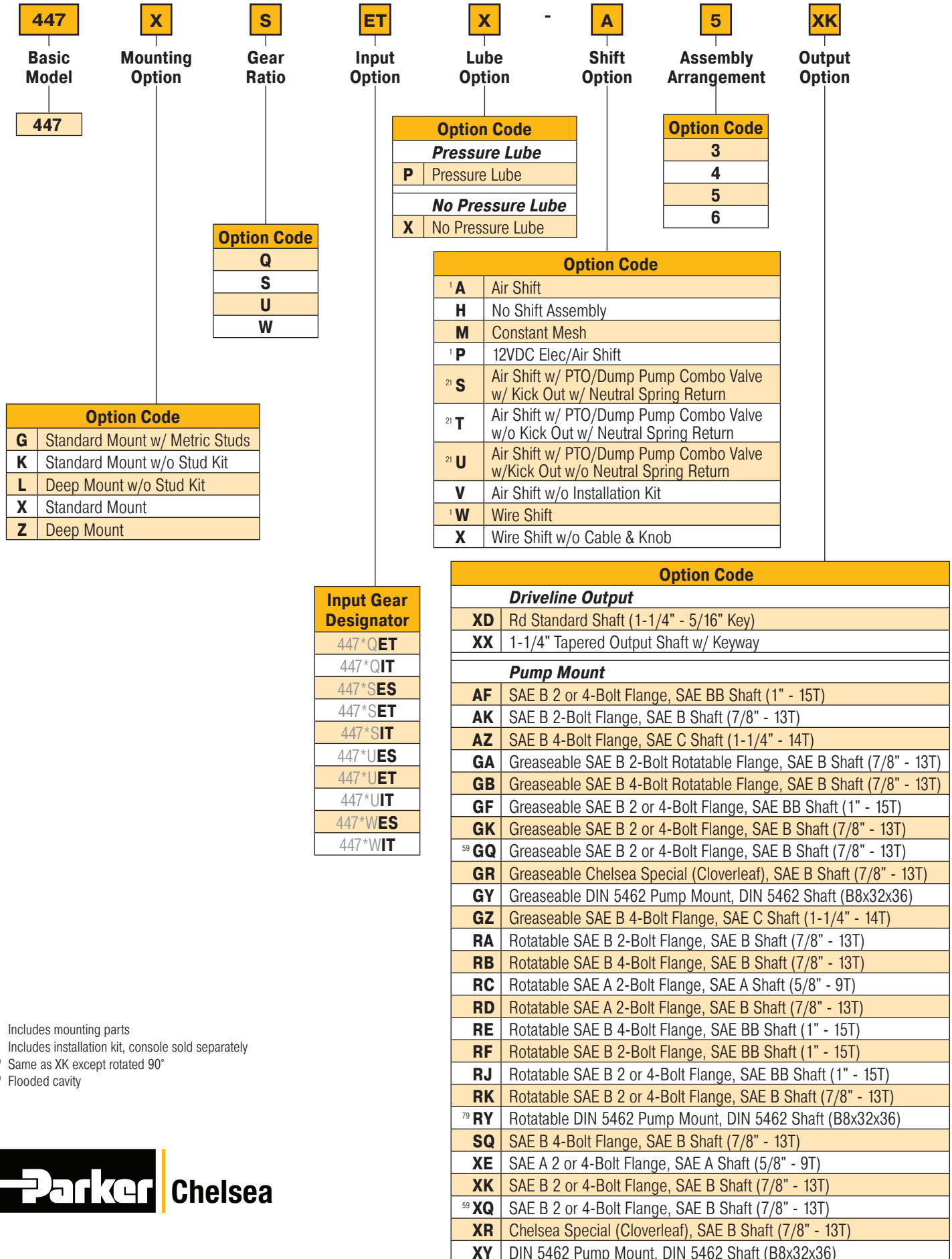
Product Features and Benefits:

- Innovative – Eliminates interference problems inside transmission/PTO opening.
- Output Options – Pump and Driveshaft options.
- Confidence – Two Year Warranty.
- Ease of Installation – Reduced installation time.
- Input Gear – One piece.
- Shift Options – Multiple shift options.
- Speeds – Multiple speed ratios.



447 Series Power Take-Off – Multiple Transmission Options

Model Number Designator



¹ Includes mounting parts

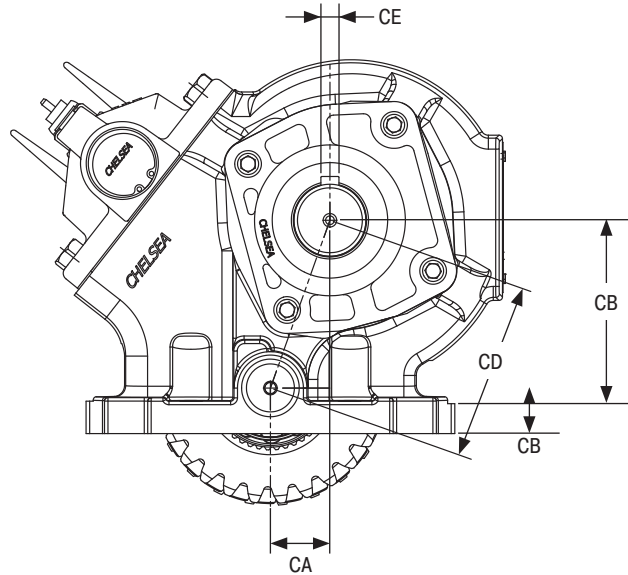
²¹ Includes installation kit, console sold separately

⁵⁹ Same as XK except rotated 90°

⁷⁹ Flooded cavity

447 Series Power Take-Off – Multiple Transmission Options

Dimensions & Specifications – For PTO output information see application catalog



PTO Series	Part Number	CA	CB	CD	CE
447 Standard	1-P-557X	1.40" (R, S, U)	3.01" (R, S, U)	3.32" (R, S, U)	.31" Key Width
		1.03" (Q, W)	2.91" (Q, W)	3.09" (Q, W)	
447 Deep Mount	1-P-558X	1.40" (R, S, U)	3.01" (R, S, U)	3.32" (R, S, U)	
		1.03" (Q, W)	2.918" (Q, W)	3.09" (Q, W)	

Specifications Chart	Approximate Weight: 21 lbs. [9.5 kg]			
	447*Q	447*S	447*U	447*W
Intermittent Torque Rating lb-ft [N-m]	225 [305]	200 [271]	195 [264]	175 [237]
HP Rating for Intermittent Service				
At 500 RPM of Output Shaft HP [kW]	21 [16]	19 [14]	19 [14]	17 [12]
At 1000 RPM of Output Shaft HP [kW]	43 [32]	38 [28]	37 [28]	33 [25]

Parker Hannifin Corporation
Chelsea Products Division
 8225 Hacks Cross Road
 Olive Branch, MS 38654 USA
 phone 1-888-PH4-TRUK (1-888-744-8785)
 chd_support@support.parker.com
 www.parker.com/chelsea

HY25-0010-B1/US November 2025

© 2025 Parker Hannifin Corporation

